

MAI TĀMAKI

TĀMAKI IS AN AWESOME PLACE TO LIVE

GOODBYE GI

.....
**COBBLER CALLS
IT A DAY**

CYCLE TIME

.....
**BIKE HUB
OPENS UP**

RAFT READY

.....
**PANMURE BASIN
FUN DAY**

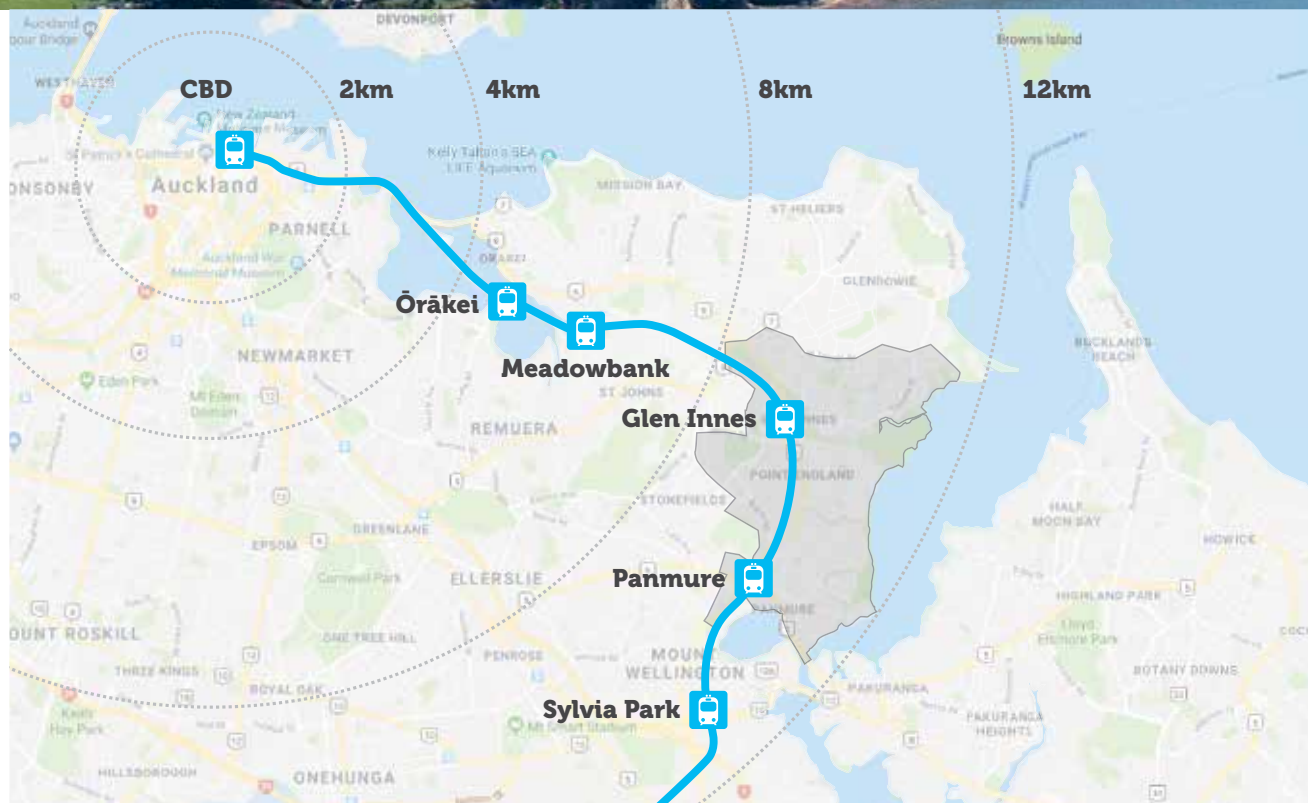


TĀMAKI

.....

With a rich history, inclusive community spirit and central location, Tāmaki stands out for its wealth of potential; both of people and place. It has great transport links and is only 15 minutes from the CBD by train.

It has two town centres, Sylvia Park Shopping Centre on its doorstep and safe swimming beaches nearby. Take a look through Mai Tāmaki to discover why this is a great place to live, work and raise a family.





WELCOME



John Holyoake

It's been a busy time in Tāmaki this summer. I hope you and your whānau have had a chance to get out and enjoy some of the great community events on offer.

Events are a great way of bringing people together, but as we go to print, efforts are underway across New Zealand to stem the spread of coronavirus. That means we may have to pull back on the number of community events TRC is involved with for the time being. We'll make sure we let you know about any changes.

One of the biggest events in Tāmaki last year was the Pasifika Gala (story p26). Who doesn't like food, music and dancing right? My mouth is still burning from the Fijian hot sauce that Talei's mum made.

You might also have seen the new

EcoMatters Bike Hub in Maybury Reserve (p16). The hub's aim is to help get more people into cycling by teaching basic bike maintenance skills and selling or gifting refurbished bikes.

I was there recently and really enjoyed the vibe being created by the games day, people fixing and riding bikes and enjoying an ice cream. One of our goals is to make Tāmaki a place where people walk and ride bikes, rather than using cars to get around.

I'd like to wish Glen Innes cobbler John Pearce well in his retirement (p10). His business has been a cornerstone of the Glen Innes town centre for decades and he'll be greatly missed.

I was in John's shop one day and noticed that he had a letter about a street being named after his

father Reg, hanging proudly in his shop. We started having a chat about his dad and I asked him if he'd like a replica of the street sign, which he did.

To be honest I'm not sure he knew I worked for TRC, or that I was serious, but it was a proud moment when we were able to give John his street sign. Funny how these things happen.

It's now become a tradition for us to give replica signs to the families of anyone that has a street named after them.

Take care and see you at our next great Tāmaki event.

John Holyoake
TRC chief executive

HIGHLIGHTS

8



Tāmaki legends

Replica road signs acknowledge years of service.

12



Pasifika sights & sounds

The Tāmaki Pasifika Gala was a hit with locals.

14



Home of their own

TRC's shared ownership programme is in full swing.

20



Regeneration update

The regeneration programme and housing development are progressing well.

Cover photo Jiaying Ding performs at TRC's Lunar New Year Festival. **Opposite** Testing out the EcoMatters Bike Hub in Glen Innes.

BUILDING A NEW LIFE

.....

Wilus Heka is loving being employed for the first time in 13 years.



The Glen Innes resident is working as a labourer for Triple C Contractors, thanks to the Tāmaki Jobs & Skills Hub.

"I had no job for 13 years. A good friend of mine told me to go to the Tāmaki Jobs & Skills Hub if I wanted a job."

After putting together his work history and CV at the hub, the team found a job for him within two weeks at Triple C.

Having done a NZQA recognised Level 4 construction course before visiting the hub helped him secure the job.

"The team at the hub are great. I feel very comfortable talking to them.

"They keep in touch regularly, which keeps me motivated."

Wilus, 42, has also developed close relationships with all team members within Triple C.

"The most important thing is keeping an open and honest relationship between myself and my project manager"

Wilus started off working with Triple C on a project for Tāmaki Regeneration in Pleasant Rd, Panmure, which involved a lot of demolition.



Now he's expanding his skills on a new build in Ponsonby, which means building from the bottom up.

That's included reinforcing walls, working on the roof and a strong health and safety focus.

"They know they can trust me. Not many people have trusted me during my life, so that's really important to me."

He grew up in Panmure and now lives in Glen Innes.

Triple C managing director Lisa Welsh says Wilus has been a fantastic worker since joining the company about a year ago.

Wilus has shown he is willing to go the extra mile at work on several occasions, Lisa says.

"A great example of Wilus' dedication is when we were working at Pleasant Rd there was some grass that we sowed over Christmas. Wilus offered to water it because he lived in the area.

"He didn't need to do that, but it's the type of stuff Wilus is willing to do."

"The thing about our team is it's not about titles or the certificates we hold. It's about making everyone successful."

GREAT CONNECTION WITH THE HUB

.....

During the Pleasant Rd project, Triple C worked alongside the Tāmaki Jobs & Skills Hub, employing three staff.

Two of them continue to work for the company, with one being offered an apprenticeship.

"We have built a great relationship with the team and will continue to employ more staff through the hub with future projects," Lisa says.

Triple C Contractors also promotes and invests in all avenues of trade training with

over 16 apprentices, including one from the hub.

Tāmaki Jobs & Skills Hub manager Alice Taupau says it is great that Wilus is developing his skillset by working with Triple C.

"Wilus is a great example of someone who has started off working with a company that operates in Tāmaki and is now learning so much more about the building trade on other projects around the city.

"The hub team is really proud of Wilus and will continue to support him on his employment journey."

TĀMAKI JOBS & SKILLS HUB

.....

- More than 700 Tāmaki people have found work through the Tāmaki Jobs & Skills Hub. Twenty-six of these workers have been helped into building apprenticeships.
- The Tāmaki Jobs & Skills Hub has been running since 2013. It helps job seekers get work ready by offering support with writing CVs, providing career advice, applying for jobs online, driver licence training, job matching, and mentoring.
- The range of industries include construction, logistics, manufacturing, hospitality, retail and administration, among others.
- In the last financial year, the hub supported 220 local people into work.
- Over the same period, 130 local people gained a driver's licence, 16 completed professional training and 12 entered into further education through the Tāmaki Jobs & Skills Hub.

Visit Us:

54 Mayfair Place, Glen Innes

Open:

Monday to Friday, 9am-3pm

Email:

jobshub@tamakiregeneration.co.nz

Phone:

0800 JOB HUB

TĀMAKI
JOBS & SKILLS HUB

HONOURING TĀMAKI LOCALS



Many of the new streets in Tāmaki are being named after those who made contributions to the area. Tāmaki Regeneration is recognising those local legends by giving them replica street signs. David Farland spoke to some of those who've received the signs about the thrill of being recognised.

MARSIC FAMILY – CORNERSTONE GI BUSINESS

.....

Marsic Fish Shop is such a Glen Innes institution, that the family behind it now have a new street named after them. The original Marsic brothers - Ivan and Wally, first opened their doors on Mayfair Place in 1967. Ivan has since retired in 2017. Now Wally, his son Daniel

and daughter Stephanie represent two generations of the shop's operation. It was Daniel who was kind enough to take the time to speak with Mai Tāmaki while Wally took a much-needed break after getting up in the early hours to buy fresh fish at the fish market

and prepare the store. Marsics Street is located in the new Fenchurch development.

The family got a look at the street sign in the early stages when it was first installed.

"We really noticed [it was there]

when courier drivers were making deliveries at the shop instead of the street. I guess that's how popular we are," Daniel says with a smile.

The Marsic family were very humbled by the street sign and are proud to be a foundation establishment of the Glen Innes community.

Tāmaki Regeneration also gifted them a replica street sign, which they keep visible on a wall in the shop.

"We were all very proud because Ivan and Wally have been here a long time, and we like to think that we're part of this community," Daniel says in between serving customers.

The shop continues to bustle along with phones ringing in orders and customers whipping in and out of the doors all these years later in 2020.

"The shop is run well because we try to be the best, which means being here," says Daniel.

"We know what fish is coming in, what goes out, and what people like to buy. It's a consistency thing".

Perhaps it is that consistency that has garnered the landmark shop such a good reputation through the generations and the family is now deservedly recognised with a street named in their honour.

DOREEN WILLIAMS - COMMUNITY SERVICE RECOGNISED



Doreen Williams' volunteer work in the community has been acknowledged, with a street named after her in Glen Innes.

To have her name included on a street sign located next to the old scout den (now Te Whare Piringa) where she spent so much time, makes Doreen feel "really honoured".

Tāmaki Regeneration presented her with the replica street sign recently, which she has proudly hanging in her living room.

"I have been in this community for so long, and just know a lot of really good people," she says.

When Alan Parker - the chairman from the Glen Innes Business Association, approached Doreen at the Glen Innes birthday celebration, she was shocked to learn the organisation had nominated her for the honour.

"I said, why?" and Alan simply replied, "You've been around forever."

He wasn't wrong - Doreen Williams and husband Raymond have been living at their property in Lyndale Place, Glen Innes for 54 years.

During that period, Doreen has been kept busy raising three generations of her family.

And she always put her hand up for the extra-curricular duties that came with it.

"It all started with volunteer work I did for the Salvation Army, and it was from another member there that I was soon asked to be a leader for the Glen Brae Scouts back in 1974."

It was during her time at Glenbrae Scouts when she started to develop a knack for fundraisers, which was required to raise money for the kids on camping trips.

One great way she found to raise funds for community events was holding housie nights, and she has been calling them regularly now for over 40 years.

Her talents for fundraising also extended to other ventures, including the building of the Ruapotaka Marae, and for Glenbrae School (including being on the committee) while her children Tracey and Robert were there.

"A lot of people would ask me, why do all the volunteering when you could be earning money with a job?

"And I always say, it's just something you do for the kids growing up, and of course that has always meant more".



HELP US NAME NEW STREETS

.....

As part of the regeneration programme, we need your help to name newly constructed streets in Tāmaki.

Send us your suggestions and reasons to:
info@tamakiregeneration.co.nz

Or drop into one of our offices at 244 Apirana Avenue in Glen Innes or 149 Queens Road in Panmure.

GI COBBLER SET TO RETIRE

.....

John Pearce is looking forward to retirement
after more than five decades in Glen Innes.





Cobbler John Pearce is set to hang up his tools after 55 years in Glen Innes.

He joined his father Reg as a teenage apprentice in 1965, taking over the business a decade later after Reg passed away at just 49 years old.

John has a lot of love for Glen Innes and the wider Tāmaki area and the community loves him right back, with fourth generation customers visiting the shop, following in the footsteps of their parents and grandparents.

It turns out this community connection has been one of the keys to the business' success.

"The business has always relied on a relationship with the community that works both ways.

"Over the years, we kept prices down, the quality of work up and provided good service.

"My father set up in Glen Innes because it's a great area."

However, with the lease on his shop expiring in August, John says 2020 is a good time to call it a day.

"I want to retire before I'm 70, which I will do, although I haven't decided exactly when I'll finish up yet.

"I was going to retire a couple of years ago, but my customers

wouldn't let me, so I stopped working Mondays.

"My wife Sandra has been my backbone over the years. She's a great woman."

Despite his absence, John believes Glen Innes will continue to go from strength to strength.

"Glen Innes has a big future ahead of it. I've always called Glen Innes a village, because that's what it is.

"Here people talk when they run into each other, whereas in shopping malls they bypass each other.

"English is a second language for many of our residents, but at the end of the day everyone answers to a smile and a wave."

John is a supporter of Tāmaki Regeneration (TRC) and says with all the new housing being built, there are more people coming through the village.

That includes many people from outside the area commuting to Glen Innes to do their shopping.

"One of my customers comes down from Grace Joel Retirement Village in St Heliers on his mobility scooter with several pairs of shoes from different residents for me to fix."

He's got plenty of plans for retirement, including travelling to

Australia to see his grandchildren and using the extra time to get out on his motorbike.

And he'll continue to support The Distinguished Gentleman's Ride, where classic and vintage style motorcycle riders raise funds and awareness for prostate cancer research and men's mental health.

John will also take home his equipment and continue to offer shoe repair services to rest homes, at least until he runs out of repair materials.

"It's a dying trade. Elderly people that like getting things fixed are getting fewer and fewer."

One thing John won't miss is the sore joints that come from a lifetime of manual labour.

"Arthritis comes from a lifetime of working with your hands."

Now all he has to do is find a spot at home in Howick for the replica street sign which bears his father's name, which was gifted to him by TRC.

"I'm over the moon about the street sign. The only challenge was getting it up on the wall in the shop without drilling holes in it."

John Pearce Footwear Repairs is located at 280 Apirana Ave, Glen Innes.



COMMUNITY GETS BEHIND LUNAR NEW YEAR EVENT

.....

The 2020 Tāmaki Chinese Lunar Festival saw some impressive performances, ranging from traditional singing, to modern dance and Tibetan chanting.



Local groups involved included the Panmure Chinese Association and Glen Innes Chinese Friendship Group, along with the Tāmaki Regeneration team. Also offering up their

talents at the show were the Grace Chinese Mission, Chao Shan Ensemble, New Zealand Chinese Comedy and Folk Art Society, Amber Dance Studio, Yingri Nichang Hanfu Dance

Group and New Zealand Karen Association. Te Oro Music & Arts Centre in Glen Innes played host to the event, which welcomed in the Year of the Rat - the first of the 12 lunar cycles.



Photos: BC Photography





AUCKLAND HOME OWNERSHIP DREAM COMES TRUE

.....

Moving into a brand-new home that his whānau will own for years to come is a “blessing”, Taaua Alefaio says.

Taaua and his wife Ane, who are originally from Tuvalu, purchased the Glen Innes property as part of Tāmaki Regeneration’s (TRC) shared ownership programme.

The whānau take on about 70% of the mortgage, while TRC owns the other third of the property.

Then the whānau can buy TRC’s share back over time.

“We were lucky to get a house of our own. It’s very expensive to buy a house in Auckland. We didn’t think we could get a house here,” Taaua says.

“The thing we are really happy about is it is a four-bedroom home. It’s big enough for us and the three kids – there’s more space for everyone.

"When the kids first came into the house, they were really excited. They all said 'this is my room.'"

It's also close to Glen Innes School, where their three children Tatai (11), Sunita (9) and Alefaio (8) attend.

Before moving into their new home late last year, the whānau were Tāmaki Housing tenants after struggling for several years in the private rental market.

They saw the opportunity to buy an affordable house in the Tāmaki Housing tenants' newsletter.

"We gave them a call and said we really wanted to buy a house and it went from there.

"I'd like to thank Tāmaki Housing for accommodating us for a few years. We found ourselves in a hard situation in the private properties."

The first step was to go through TRC's Pathways to Housing Independence Programme (PHI), which offers advice on becoming mortgage ready.

"It taught us about how mortgages work. It was very helpful for us when we were looking at buying a new house."

Glen Innes is the perfect location for the family to live, as it is close to their jobs in the city.

Tauaa says some family members have already been to stay and were impressed by the new home.

"My cousin from Wellington came to visit in January. He was surprised we are in a new house.

"He asked if we were renting since we're in a new house. I said we were lucky enough to get into the TRC programme."

"He couldn't believe that we could buy a property in Auckland. Getting a house is a special thing. It's an investment for the family."

Taaua says buying the property with TRC's help should give hope to other whānau who want to get on to the housing ladder.

"Most people think it's very hard to buy a house but there are ways.

You have to look for options."

TRC strategic partnerships manager Afoa Tevita Malolo says he's thrilled with the family's purchase.

"Our shared ownership programme is designed to help first home buyers into the housing market and I can't think of a more deserving whānau than Taaua, Ane and their wonderful children.

"We look forward to helping many more families into shared ownership homes in the coming years.

"We'll do this with the help of our partners the Housing Foundation who support whānau through the home ownership journey, from the application process to settlement and the Commission for Financial Capability, who provide content for our PHI programme."

To find out more about TRC's shared ownership programme, visit www.tamakiregeneration.co.nz/affordable-homes



**To watch Tagata
Pasifika's story on the
Alefaio whānau go to:
[tamakiregeneration.co.nz/
news](http://tamakiregeneration.co.nz/news)**

BIKE HUB BRINGS RESERVE TO LIFE

.....

The new EcoMatters Bike Hub in Glen Innes is proving a hit with locals.



Located in Maybury Reserve off Taniwha St, the hub helps get more people into cycling, by teaching basic bike maintenance skills, like how to inflate tyres, repair punctures, and adjust brakes and gears.

The hub, which is funded by Tāmaki Regeneration (TRC), Maungakiekie-Tāmaki Local Board and Auckland Transport, also rescues bikes destined for landfill, giving them a new lease of life by making

them available to the community at low cost.

Glen Innes Bike Hub coordinator Jackie Makasani says the hub has been a popular addition to the area after it started up in December.

"I love that the kids have the opportunity to come down here and learn. A lot of them walk past and ask, 'what are you doing here miss?'

"I tell them we help people maintain their own bikes - we don't do it for them.

"The kids come here and help out. I'll give them some second-hand parts and they'll come back and help set up and tidy up rubbish."

Jackie says EcoMatters' other bike hubs in west Auckland are a great model for how the Glen Innes facility will work.

"Seeing the New Lynn and Henderson hubs and the amount of people that come to them has been really good.

"The bike hub is really good for our community. The first day we opened, we were getting donations."

The hub is open Thursday to Sunday from 10am-2pm, but its busiest times are on weekends, with up to 20 people turning up throughout the day.

"It's a mix of ages and nationalities, which is really good. A lot of people show interest and get back into bike riding.

"Some haven't ridden a bike since they were kids. It makes them excited. We've got to get the neighbourhood active in a fun and safe way.



"A lot of people say they've had bike parts in the garage for a long time and didn't know what to do with them until they brought them to us."

Jackie says it's a thrill to be able to offer bike parts for a koha and the advice for free.

"The dearest price we have is about \$8.

"A lot of our kids around here don't have helmets, so we can give them a second-hand helmet. Safety first."

Having a job so close to home is fantastic for Jackie, who is a Glen Innes resident of 19 years and found the role through the Tāmaki Jobs & Skills Hub.

"I love my job. I like playing with mechanical things - it excites me.

"I've got a background in car maintenance. Now I'm learning about bikes and how they work."

EcoMatters Bike Hub manager Brent Bielby says the organisation jumped at the chance to set up in Glen Innes, following some well attended bike maintenance workshops it held in the area last year.

"With the success we've had with our New Lynn and Henderson



hubs, we thought we could do this all over Auckland if we apply the same approach.

"We ran some bike maintenance workshops at Te Oro in Glen Innes and realised we'd love to come in here and do a fully-fledged bike hub.

TRC currently owns the piece of land at Maybury Reserve, where the hub is located.

Eventually the land will transfer to Auckland Council to expand and improve the park.

TRC regeneration and placemaking general manager Joanna Brain says it's great to get in behind such a fantastic initiative.

"We're really encouraged by the positive reaction from the community to the bike hub.

"It creates a real focal point for activity in Glen Innes and gives people a different way of enjoying some of the amazing scenery dotted around Tāmaki," she says.

Check out the EcoMatters Bike Hub, open Thursday-Sunday 10am-2pm off Taniwha St, near the Line Rd intersection or visit ecomatters.org.nz for more information.



Esther and Alipate Fifita with their daughter Alessia

DINNERS BRING NEIGHBOURS TOGETHER

.....

There's nothing that connects people like
conversations during a great meal.

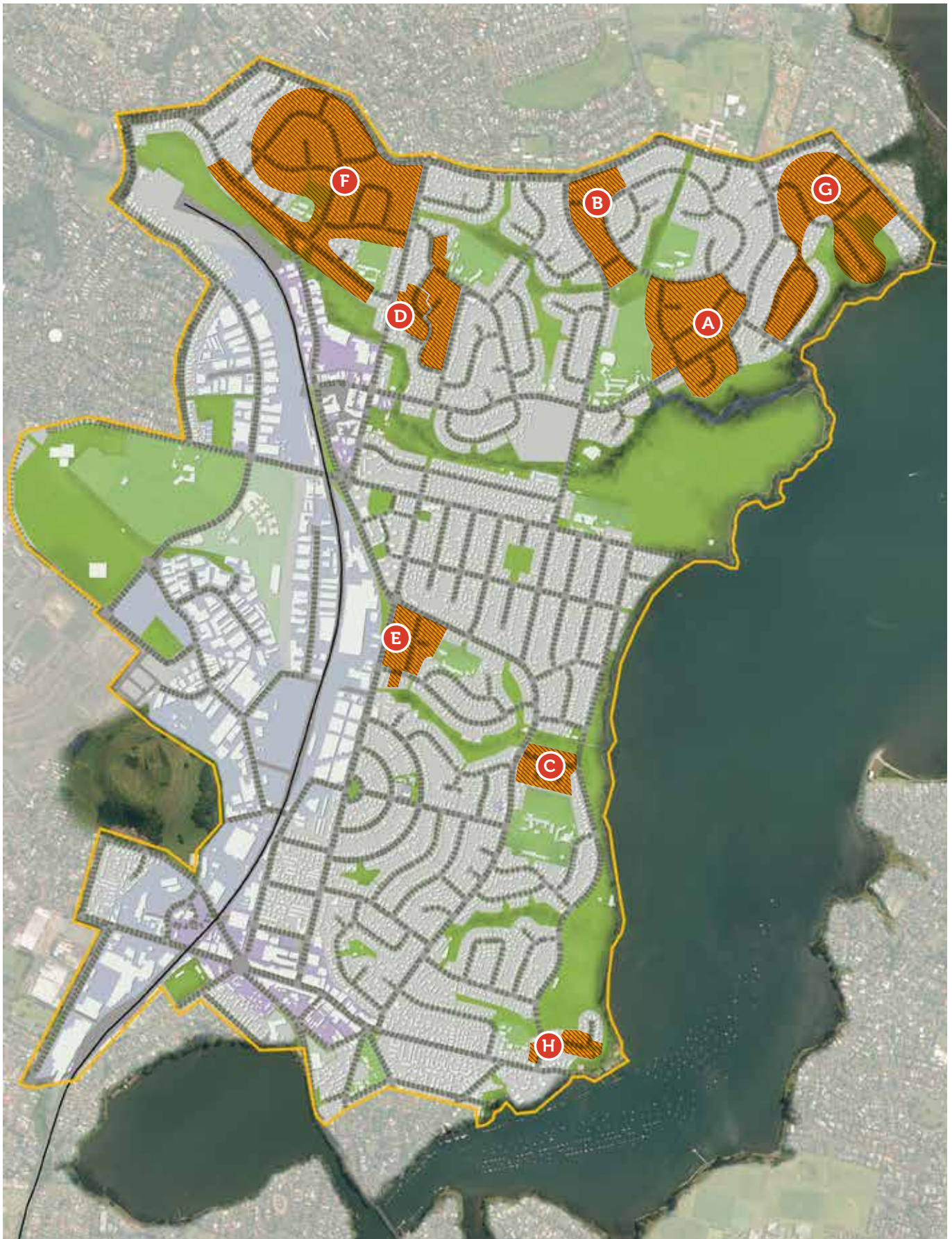
It's an idea Tāmaki Regeneration's (TRC) Neighbourhood Liaison Team has run with this summer, facilitating 15 street dinners between January and March in new housing developments.

The pot luck style dinners gave neighbours the chance to chat and share some kai.

As a result of the dinners, many neighbours who are both state tenants and private owners now know each other much better.

If you have any great ideas on how to help Tāmaki people connect with each other, email info@tamakiregeneration.co.nz







DEVELOPMENT UPDATE

.....

TRC takes a neighbourhood-by-neighbourhood approach to understand the specific needs, opportunities and challenges of each area and the families who live there. Development work is well underway in Glen Innes, with detailed planning activities progressing in Pt England and Northern Panmure.

We understand construction works can be very disruptive. We are committed to working with the local community and will make sure residents are informed about what's happening at each stage of the programme. Visit the neighbourhoods and developments page for more information at: tamakiregeneration.co.nz.

GLEN INNES

.....

Fenchurch neighbourhood



Over 400 new homes will be built in the Fenchurch neighbourhood, including a mix of state, affordable and private market housing. More than 250 houses, including over 100 state homes have been completed so far. The park on Aveline Place has also been completed, with the naming process underway. A new playground at the park is also being built.

Current projects include the Fenchurch Park development, bordered by Fenchurch Street, Leybourne Circle and Sunnymead Road. TRC has partnered with RAWA and GJ Gardner to redevelop this area, which includes approximately 150 houses, with over 50 houses still to be completed.

RAWA and GJ Gardner are also the development partners for the area south of Taniwha Street, around Kestrel Place and Kiano Place. This redevelopment will include approximately 70 homes, ranging from 2-5 bedrooms in size and construction is currently underway.

The NZ Housing Foundation (NZHF) completed 40 new homes in Fenchurch recently, with another 30 to come in the next few years. The Foundation is focusing its building efforts around Sunnymead Road, Taniwha Street and Mansfield Street.

An existing walkway is being upgraded into a linear park called Wākāinga Walk, between Sunnymead Road and Taniwha Street. This park is designed to provide safe passage for pedestrians and TRC is currently in discussions with Auckland Transport to maximise the opportunities of this walkway. House construction is also continuing on the eastern side of Tāmaki College through Classic Builders, where a total of 20 homes are being completed.

Overlea neighbourhood B



Over 140 new homes will be built in the Overlea neighbourhood. Nine houses have been completed in Overlea Central to date. An updated plan for Overlea Central is being developed.

Overlea South will boast about 50 new homes, including 16 state houses. The Overlea North development is currently being redesigned.

Line-Epping neighbourhood D

The Line/Epping neighbourhood development includes a mixture of state, affordable and private market homes in a variety of styles.

Civil works are complete, with house construction likely to begin in late 2020. The extension of Eastview Rd will link the Line/Epping Neighbourhood with Glen Innes town centre.

Northern Glen Innes neighbourhood F



Development partner Creating Communities' final project in Tāmaki is an enclave of ten two and three-bedroom, architect-designed houses on Castledine Crescent in Northern Glen Innes. Five of the homes are connected by a series of walkways and boardwalks set in a landscaped native bush setting.

POINT ENGLAND

.....

Hinaki neighbourhood E

About 50 state homes along parts of Pilkington Road, Tripoli Road, Torino Street, Parata Street and Hinaki Street will be developed into approximately 300 state, affordable and private market homes. Civil work will be completed by the end of March, with construction expected to begin later in the year.

Tamatea Avenue development



This small development is located at 7-11 Tamatea Avenue and involved the redevelopment of three existing houses into 10 new state homes, comprising two, three and four bedroom dwellings which are now complete. Tenants are have moved into the terraced houses.

PANMURE

.....

Derna/Tobruk neighbourhood **C**



Approximately 100 new houses will be built in the Derna/Tobruk area. The first 19 new homes planned for the first stage around Sollum and Tobruk roads, which includes seven state and two affordable homes, have been completed by development partner Fletcher Living.

Civil works in Stage 2 are almost complete. Demolition in Stage 3 is finished, and civil works will start later in the year. All new homes in the Derna/Tobruk neighbourhood are expected to be completed towards the end of 2023.

Armein neighbourhood **H**

The Armein neighbourhood is expected to include approximately 60 new warm, dry homes. These will be a mixture of state, affordable and private market houses.

House demolition is complete, with civil works likely to commence in late 2020. A development partner is yet to be selected. A development strategy about how the area will look in the future is currently being worked on.

REGENERATION HIGHLIGHTS

.....



Whānau moved into their TRC-led shared ownership homes.



Homes completed in Stage 1 of the Derna-Tobruk development.



EcoMatters Bike Hub in Maybury Reserve to help raise interest in cycling, was set up with help from TRC.



People were helped into work by the Jobs & Skills Hub since it began in 2013.

FROM K POP TO KAPA HAKA

.....

Tāmaki locals got the chance to get their groove on at the Mayfair Social dance events throughout February and March.



Photos: No Six

The interactive events allowed the audience to learn a dance number, practice and then perform in front of the crowd at the Glen Innes town centre.

K-pop, Bollywood, kapa haka, and swing were

all on offer for people to try out and test their dance skills. Keep an eye on www.facebook.com/shapingtamakittogether for more interesting events coming up in Tāmaki.

BASIN FUN DAY A BIG HIT

.....

Thousands of people flocked to the pirate-themed Panmure Basin Fun Day for a heap of family fun earlier this month.



The highlight of the day was the annual Great Raft Race, with the Men's Shed team winning first place the third year in a row.

Coming in second was the Wainui Sea Scouts Senior team, with The Crafty Rafties picking up third place and Tāmaki Regeneration winning the Team Spirit Award. The event was sponsored by Mt Wellington

Foundation Ltd, Maungakiekie-Tāmaki Local Board, and Panmure Business Association.

"It was fantastic to see thousands of people come along to the fun day, which is becoming a popular event on the summer events calendar," Panmure town centre manager Chris Sutton says. "We can't wait to see everyone back again next year."

SIGHTS AND SOUNDS OF THE PACIFIC IN GI

.....

Hundreds of people attended the second annual Tāmaki
Pasifika Gala, held in the Glen Innes town centre.



Photos: Kokomedia

Performers entertained the crowd with singing and dancing, while a variety of stallholders kept the crowd fed and watered with tastes from around the Pacific.

A combined effort from community members, Glen Innes Business Association and Tāmaki Regeneration meant the event, held in November, was a great success.

TĀMAKI NOTICES

COMMUNITY LISTINGS

STAY INFORMED

Are you keen to stay updated about the Tāmaki Regeneration programme?

Then check out our Facebook page for the latest information about our work in Glen Innes, Point England and Panmure, along with what's happening in the area.

Go to:

www.facebook.com/shapingtamakitgether
to find out more.

SHARE YOUR IDEAS ABOUT PT ENGLAND AND PANMURE NORTH

If you could change or improve one thing about your neighbourhood, what would it be?

We are developing initial plans for possible regeneration in Pt England and Northern Panmure and, as part of this process, we want to hear what you think about your neighbourhood.

Let us know what your ideas are by visiting <https://trc.mysocialpinpoint.com/home/>

THE TĀMAKI JOBS & SKILLS HUB IS READY TO HELP

The hub is now located at 54 Mayfair Place (the old ASB building) in the Glen Innes town centre.

Pop in for a cuppa and a chat about upskilling, getting a driver licence, work-related courses and job opportunities.

Looking for a job? Come in and see us, call us or send us an email.

TĀMAKI
JOBS & SKILLS HUB

54 Mayfair Place, Glen Innes
Open: Monday to Friday, 9am-3pm
Email: jobshub@tamakiregeneration.co.nz
Phone: 0800 JOB HUB

Tāmaki Jobs & Skills Hub is part of the Tāmaki Regeneration Programme

JOBS AT TRC

TRC has a number of jobs you may be interested in applying for. If you are keen to work for a team that is passionate about Tāmaki check out: tamakiregeneration.co.nz/recruitment

THIS MAGAZINE IS FREE

Sign up for your free issue at:
tamakiregeneration.co.nz

EMAIL COMMUNITY LISTINGS TO: communications@tamakiregeneration.co.nz



TĀMAKI



TĀMAKI REGENERATION



@TĀMAKIREGEN



TAMAKIREGENERATION.CO.NZ

LIVE IN A PLACE THAT WILL GROW
WITH YOU AND YOUR WHĀNAU



TAMAKI

VISIT [TAMAKIAKL.CO.NZ](https://tamakiakl.co.nz) FOR MORE

PANMURE \
GLEN INNES /
PT. ENGLAND _